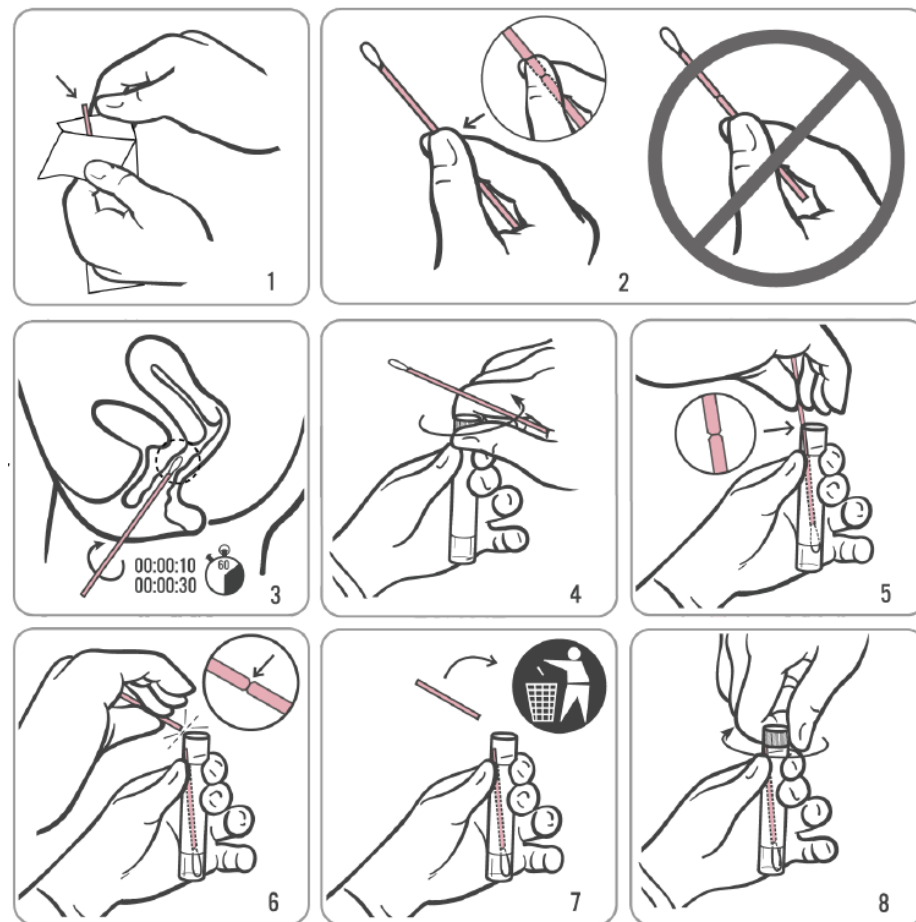


VAGINAL SWAB SPECIMEN COLLECTION

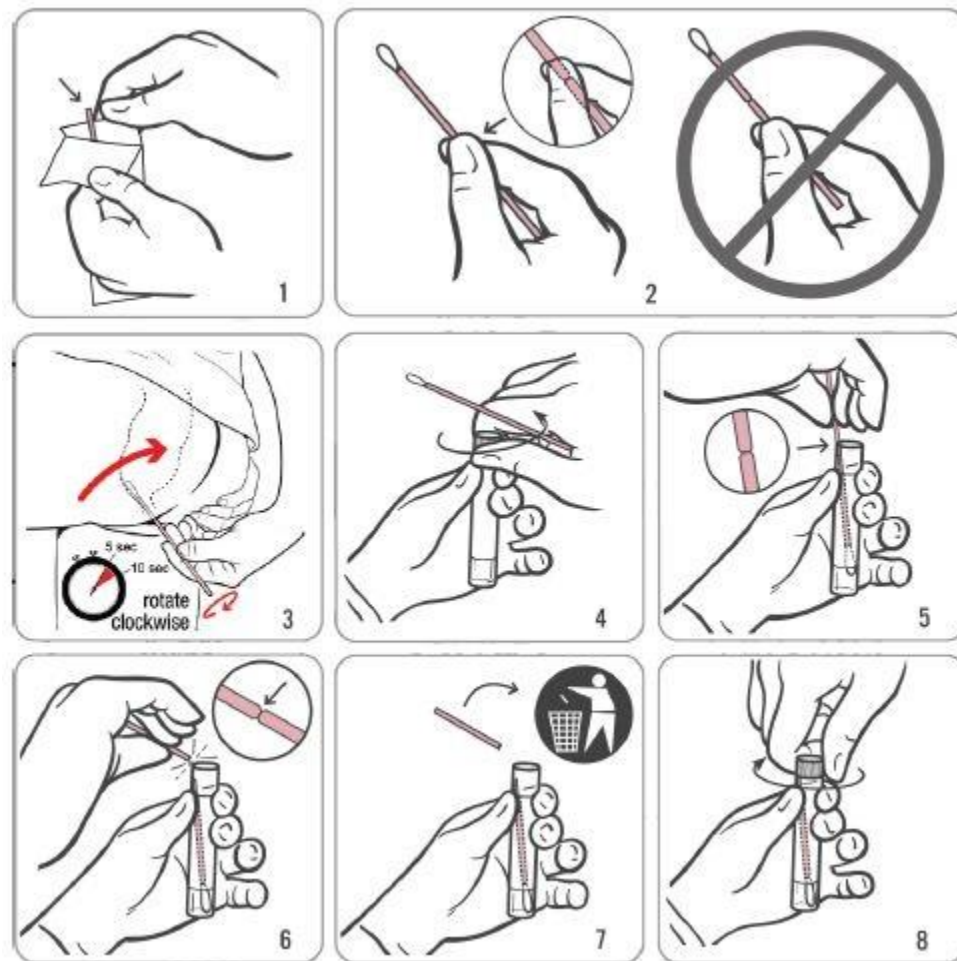
1. Partially peel open the swab package (**PICTURE 1**) and remove the swab
 - *Do not touch the soft tip or lay the swab down*
2. Hold the swab by placing your thumb and forefinger in the middle of the swab shaft covering the black score line (**PICTURE 2**)
 - *Do not hold the swab below the black score line*
3. Carefully insert the swab into the vagina about 2 inches (5 cm) past the introitus (**PICTURE 3**) and gently rotate the swab for 10-30 seconds
 - *Make sure the swab touches the vaginal walls so that moisture is absorbed by the swab*
4. Withdraw the swab without touching the skin
5. While holding the swab in the hand, unscrew the cap from the tube (**PICTURE 4**)
6. Place the swab into the transport tube so that the black score line is at the top of the tube (**PICTURE 5**)
7. Carefully break the swab shaft at the black score line against the side of the tube (**PICTURE 6**)
8. The swab will drop to the bottom of the vial. Discard the top portion of the swab shaft (**PICTURE 7**)
9. Tightly screw the cap onto the tube (**PICTURE 8**).
10. Ensure tube is labeled appropriately with 2 patient identifiers, and the specimen source. Submit with a completed lab requisition.



***If the contents of the tube are spilled, or the swab is dropped,
replace with a new Aptima® Multitest Swab Kit***

RECTAL SWAB SPECIMEN COLLECTION

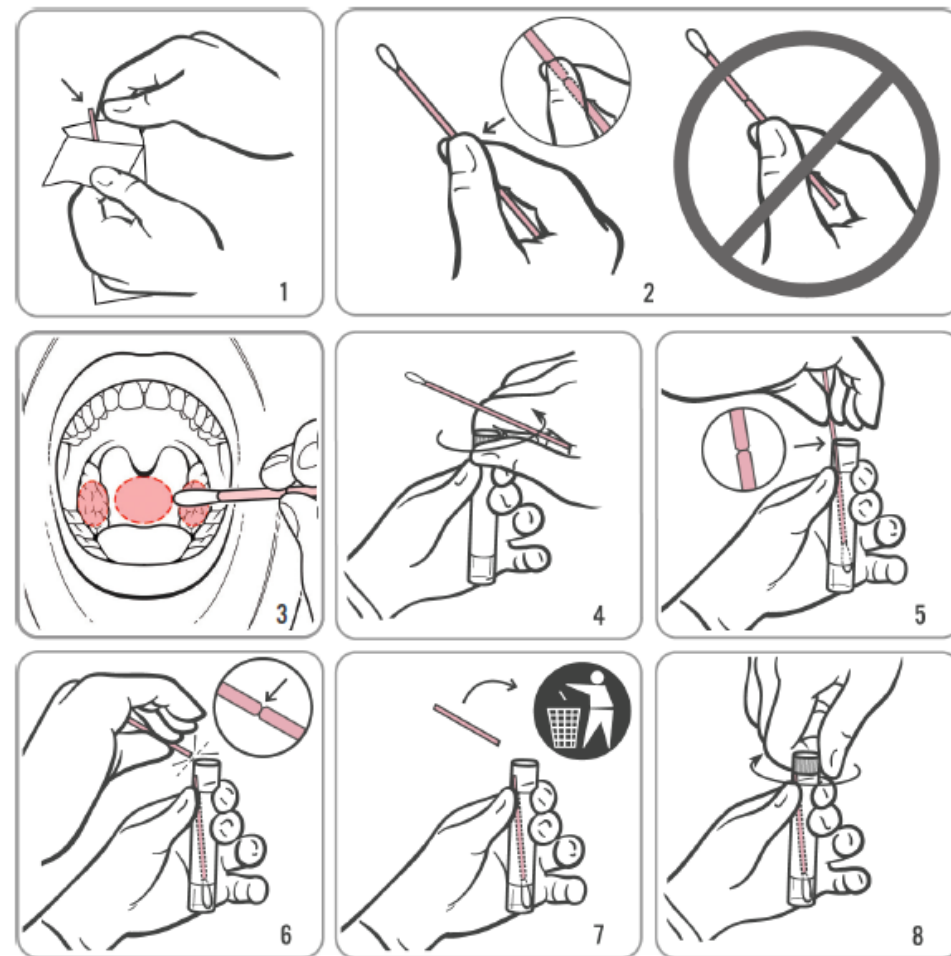
1. Partially peel open the swab package (**PICTURE 1**) and remove the swab
 - Do not touch the soft tip or lay the swab down
2. Hold the swab by placing your thumb and forefinger in the middle of the swab shaft covering the black score line (**PICTURE 2**)
 - Do not hold the swab below the black score line
3. Carefully insert the swab into the rectum about 1-2 inches (3-5 cm) past the outside of the anus and gently rotate the swab for 5-10 seconds (**PICTURE 3**)
4. Withdraw the swab without touching the skin
5. While holding the swab in the same hand, unscrew the cap from the tube (**PICTURE 4**)
6. Place the swab into the transport tube so that the black score line is at the top of the tube (**PICTURE 5**)
7. Carefully break the swab shaft at the black score line against the side of the tube (**PICTURE 6**)
8. The swab will drop to the bottom of the vial. Discard the top portion of the swab shaft (**PICTURE 7**)
9. Tightly screw the cap onto the tube (**PICTURE 8**)
10. Ensure the tube is labeled appropriately with 2 patient identifiers, and the specimen source



***If the contents of the tube are spilled, or the swab is dropped,
replace with a new Aptima® Multitest Swab Kit***

THROAT SWAB SPECIMEN COLLECTION

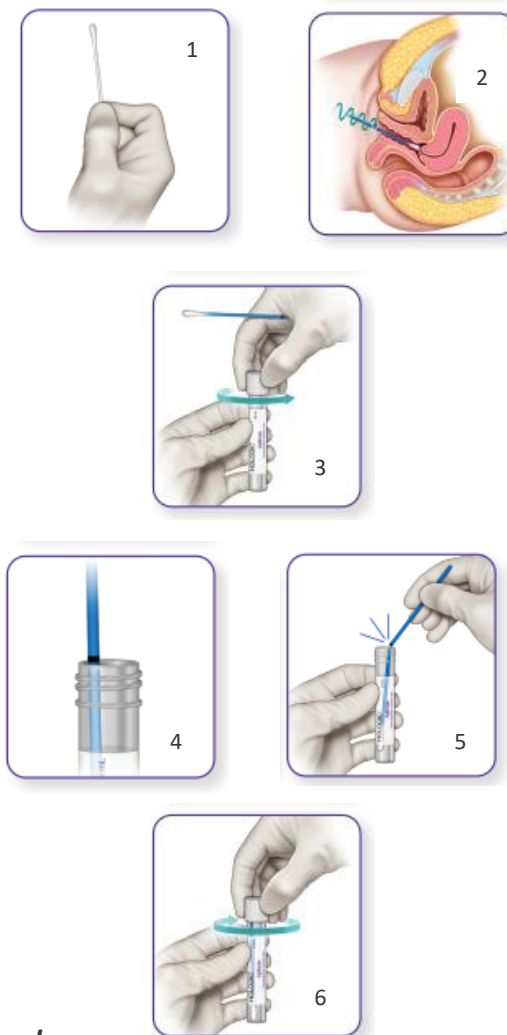
1. Partially peel open the swab package (**PICTURE 1**) and remove the swab
 - Do not touch the soft tip or lay the swab down
2. Hold the swab by placing your thumb and forefinger in the middle of the swab shaft covering the black score line (**PICTURE 2**)
 - Do not hold the swab below the black score line
3. Carefully insert the swab into the patient's wide open mouth, ensuring contact with the back of the throat and (if present) tonsils on both sides (**PICTURE 3**)
4. Withdraw the swab without touching the inside of the cheeks or tongue
5. While holding the swab in the same hand, unscrew the cap from the tube (**PICTURE 4**)
6. Place the swab into the transport tube so that the black score line is at the top of the tube (**PICTURE 5**)
7. Carefully break the swab shaft at the black score line against the side of the tube (**PICTURE 6**)
8. The swab will drop to the bottom of the vial. Discard the top portion of the swab shaft (**PICTURE 7**)
9. Tightly screw the cap onto the tube (**PICTURE 8**)
10. Ensure tube is labeled appropriately with 2 patient identifiers, and the specimen source



***If the contents of the tube are spilled, or the swab is dropped,
replace with a new Aptima® Multitest Swab Kit***

ENDOCERVICAL SWAB SPECIMEN COLLECTION

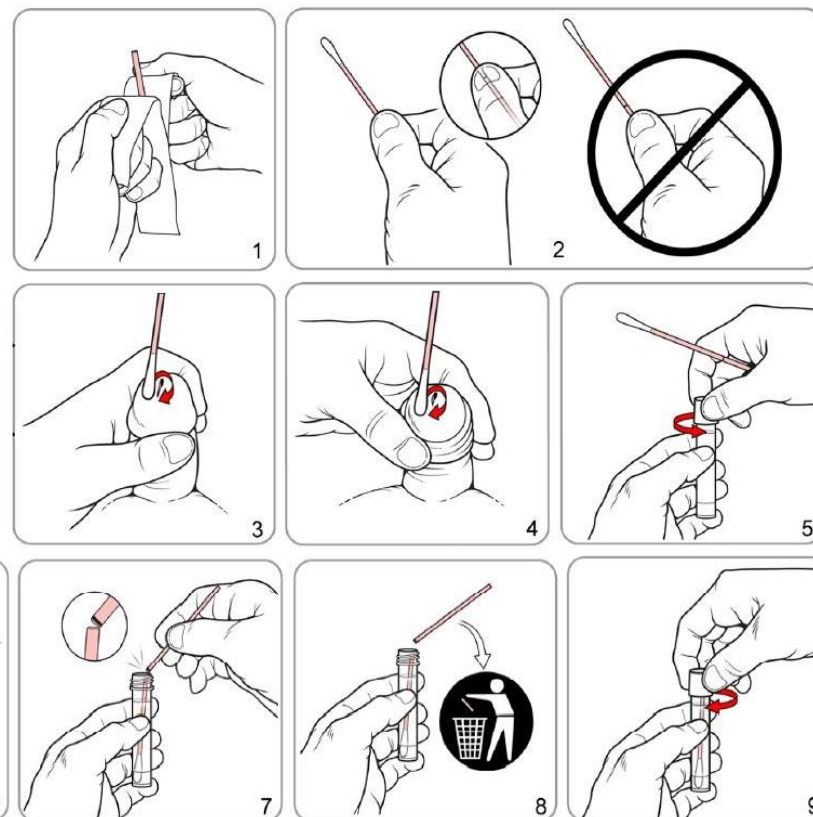
1. Use the white cleaning swab (**PICTURE 1**) to remove excess mucus from cervical os and surrounding mucosa. Discard this swab.
2. Insert blue collection swab into endocervical canal. Gently rotate swab for 10 to 30 seconds. Withdraw swab; avoid contact with vaginal mucosa. (**PICTURE 2**)
 - *If the soft tip is touched, laid down, or dropped, discard and get a new Aptima Unisex Swab Specimen Collection Kit.*
3. While holding the swab in the same hand, unscrew the cap from the tube (**PICTURE 3**)
4. Place the swab into the transport tube so that the black score line is at the top of the tube (**PICTURE 4**)
5. Carefully break the swab shaft at the black score line against the side of the tube (**PICTURE 5**)
6. The swab will drop to the bottom of the vial. Discard the top portion of the swab shaft
7. Tightly screw the cap onto the tube (**PICTURE 6**)
8. Ensure tube is labeled appropriately with 2 patient identifiers, and the specimen source. Submit with a completed lab requisition.



***If the contents of the tube are spilled, or the swab is dropped,
replace with a new Aptima® Multitest Swab Kit***

PENILE MEATAL SPECIMEN COLLECTION

1. Partially peel open the swab package (**PICTURE 1**) and remove the swab
 - Do not touch the soft tip or lay the swab down
2. Hold the swab by placing your thumb and forefinger in the middle of the swab shaft covering the black score line (**PICTURE 2**)
 - Do not hold the swab below the black score line
3. See **PICTURE 3** if the patient is circumcised (no foreskin) or **PICTURE 4** if they are not circumcised. In uncircumcised men, roll the foreskin down before starting
4. Hold the penis with your free hand (hand with no swab). Using your other hand (with the swab), roll the swab just at the tip or outside the urethral opening
 - Be sure to roll the swab completely around the opening to get the best sample. It is not necessary to put the swab deep inside the opening of the penis
5. While holding the swab in the same hand, unscrew the cap from the tube (**PICTURE 5**)
6. Place the swab into the transport tube so that the black score line is at the top of the tube (**PICTURE 6**)
7. Carefully break the swab shaft at the black score line against the side of the tube (**PICTURE 7**)
8. The swab will drop to the bottom of the vial. Discard the top portion of the swab shaft (**PICTURE 8**)
9. Tightly screw the cap onto the tube (**PICTURE 9**)
10. Ensure tube is labeled appropriately with 2 patient identifiers, and the specimen source



***If the contents of the tube are spilled, or the swab is dropped,
replace with a new Aptima® Multitest Swab Kit***